

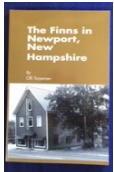
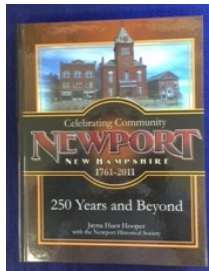
NEWPORT HISTORICAL SOCIETY

2016-2017 NHS GIFT ITEM LIST



Books & Publications:

**Celebrating Community – Newport NH
1761 to 2011 – 250 Years & Beyond**
\$30.00
A Peek At Newport (1842 – 1843)
\$15.00
The Book of Old Newport - \$15.00



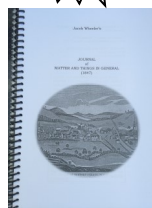
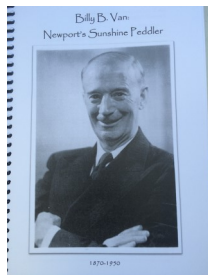
The Finns in Newport NH - \$25.00



The Greeks of Newport NH - \$25.00



**Billy B. Van, Newport's
Sunshine Peddler** -
\$15.00



**Journal of Matter and Things in General - 1847,
Jacob Wheeler's Diary** - \$10.00

Mansions & Prominent Landmarks of Newport - \$12.00
Streets, Roads & By-Ways of Newport, NH \$12.00
Children's Corbin Cover Bridge book & Crayons - \$5.00
Holden Poem – The Last Fire-Haunted Spark - \$5.00
Adventures of a Bush Pilot - \$5.00
Adventures of a Bush Pilot II - \$5.00
Wheeler History of Newport NH 8 x 11 size - \$45.00
Wheeler History of Newport NH 6 x 8 size - \$35.00
Index to Wheeler History (with Spousal info) - \$15.00
Replicate – The Rebuilding of Corbin Covered Bridge in Newport NH - \$10.00
Covered Bridges of Sullivan County - \$1.50
Spanning Generations – The Homecoming of the Corbin Covered Bridge - \$1.50

Hand-Painted Ornaments by artist, Joan Dodge:

\$12.00 each (Boxed and bubble-wrapped)
Newport Train Depot - retired, limited availability
Newport Firehouse - retired, limited availability
Tiger Mascot - retiring end of this year
Parlin Field - retiring end of this year
**Eagle Block, Nettleton House Museum,
Towle School, Newport House,
Carnival Queen, King Carnival,
Dog Sled racer**



Other Ornaments:

Pewter Corbin Covered Bridge - \$16.00
(by Hampshire Pewter, Dover NH)



Note Cards:

These scenes are water colors by artist, Joan Dodge, sent as proofs for our ornament collection.

3 separate assortments: Each set contains five note cards with envelopes—\$5.00

Set A includes: Richards Library, Richards School, South Congregational Church, Pier Railroad Covered Bridge, 250th Anniversary Ornament.



Set B includes: Skating on the Common, The Old Courthouse, Mary Had a Lamb, Town Hall/Opera House, Corbin Covered Bridge

Set C includes: Train Depot, Firehouse, Tiger Mascot, Parlin Field, Sarah J. Hale



**Five same-scene Note Cards
with envelopes** - \$5.00

Skating on the Common,
Train Depot, Firehouse,
Parlin Field, Corbin Covered



Bridge, The Old Courthouse, Mary Had a Lamb, Nettleton House Museum, Queens, King Carnival, Dog Sled Racer.

**The First Eighty Years
of Winter Carnival** - \$5.00



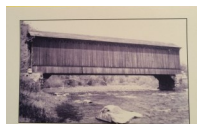
Miscellaneous:

Camp Mug with etched image of Nettleton House Museum - \$12.00, choose Burgundy, Cobalt Blue, or Green



Pier Railroad Covered Bridge Mug - \$5.00

Vintage Post Cards – 12 different scenes reproduced from original cards including explanation sheet. Three different sets (including one set on Newport's Covered Bridges) - \$7.00 per set



Newport Town Crock from Salmon Falls Stoneware. Quart size - \$29.00 - Pint size - \$22.00



DVD: Henry Phipps Goes Skiing/The Wild Goose (Babe Sargent/Bruce Cronin) - \$23.00

Drinking Glasses, etched with Opera House scene & weighted bottom.

14oz Tall Drinking glass - \$12.00

14oz On the Rocks glass - \$12.00



Clothing:

Sunshine Shirts: white with colored logo

Tee Shirts – Sm, Med, Lg, XLg - \$17.00 --- 2XL - \$20.00

Sweatshirts – Sm, Med, Lg, XLg - \$28.00 – 2XL - \$32.00

larger sizes available by special order

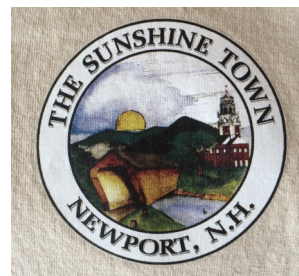


Town Shirts: beige available only in sizes listed below with limited quantities. Logo is on the back and a small one on front left.

Tee Shirts – Med & Lg - \$10.00

Long-Sleeved Tee Shirts – Med, Lg, XLg. - \$13.00

Sweatshirts – Med, Lg, XLg. - \$16.00



Gift Membership Certificate:

Give a gift of Newport Historical Society membership to friends or family. Membership brings 4 issues of the **Milltown Messenger**, the Society's newsletter. Memberships help finance the Mission of the Historical Society.

*Give a gift that gives two ways:
as you support the work of the
Newport Historical Society, and
help your friends and family
enjoy Newport's rich history!*

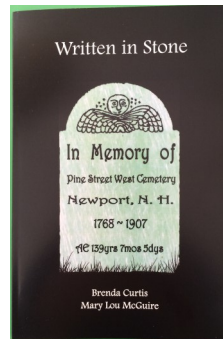
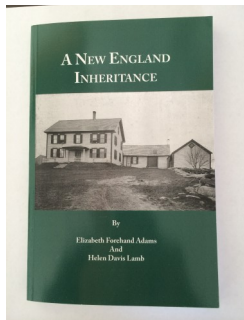
The items listed here are available at the following venues:

- ♦ **Newport Historical Society Museum**, 20 Central St, Newport. Open 10 AM to 2 PM, Sundays.
- ♦ **Sugar River Bank lobby:** Nov. & Dec., all day Friday and Sat AM until 11 AM. (Except Thanksgiving weekend.)
- ♦ **Richards School, PTO Holiday Craft Fair**, Saturday, Nov. 5, 9-3 PM. Richards Gym.
- ♦ **Newport's "Twas Just before Christmas"** celebration, at the Newport Opera House, Sat Dec. 10, 3-7 PM.
- ♦ Call the museum **603-863-1294**, or email **newporths1761@gmail.com** for other arrangements.

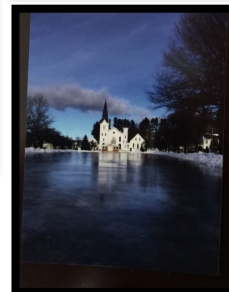
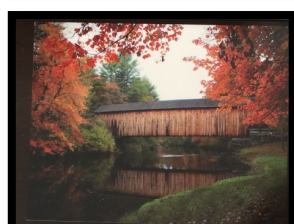
NEW ITEMS FOR SALE BY NEWPORT HISTORICAL SOCIETY



PHOTO PILLOWS: (in order) Opera House Clock Tower, Ice Rink at Twilight, Corbin Bridge (portal), Skating on the Common, Corbin Bridge (foliage side view), First Baptist Church.



NEW ITEMS ABOVE: New England Inheritance, & Written In Stone, new publications; *Skating on the Common* note cards; The Double Rainbow photo, soon to be available as a Photo Pillow and a Color Postcard.



NEW COLOR POSTCARDS

Skating on the Common
Corbin Bridge side view
Corbin Bridge portal view
Gazebo on Common
Corbin Bridge with foliage
Baptist Church on Common

Gift Shop area in Historical Society Museum



New risers and Pillow display